

debbie  
Louie

[jewelry](#)  
[about](#)  
[shop](#)  
[services](#)  
[contact](#)



debbie  
Louie

jewelry

about

shop

services

contact



## *peapods*

PMC silver, pearl, cubic zirconia, copper wire, 40" sterling chain

2-1/4"H x 3/8"W x 5/16"D (large pod)

2"H x 5/16"W x 1/4"D (small pod)

2003



debbie  
Louie

jewelry

about

shop

services

contact



## *about*

In 2003, with thoughts of entering a new career in watch technology, I enrolled in a beginning jewelry/metals class. My goal was to become familiar with basic tool handling techniques. Over the months, I realized that watch repair was not for me. Instead, I discovered a new passion -- designing and creating jewelry. ▲

I began working with copper and brass, fascinated by how malleable metal can be. Gradually, I moved on to silver and precious metal clay (PMC), and experimented with patinas to accentuate various qualities in the metals. I began to incorporate stones, gems, and found objects into my work. I also learned to carve wax and cast organic substances, adding these components to my pieces.

Because I am influenced and inspired by the organic world, many of my pieces reflect what is found in nature. Seeds, pods, leaves, flowers, textures from branches and shells -- all are captured in metal and suspended together ▼

debbie  
Louie

jewelry

about

shop

services

contact



*shop*

Facere Jewelry Art Gallery ▲  
1420 Fifth Avenue  
Seattle, WA 98101  
(206) 624-6768

Frank and Dunya  
3418 Fremont Avenue North  
Seattle, WA 98103  
(206) 547-6760

Kobo at Higo  
602-608 South Jackson Street  
Seattle, WA 98104  
(206) 381-3000

Sticks & Stones Gallery ▼

debbie  
Louie

jewelry

about

shop

services

contact



### *services*

Do you have an idea for a piece of jewelry? Not sure how to bring it to life? We can schedule an appointment to meet and explore the possibilities.

From our combined vision a sketch emerges, then the final piece. You may bring your own gemstones or choose from my selection. I make every effort to create a unique piece that is true to your wishes.

debbie  
Louie

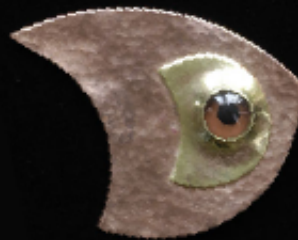
jewelry

about

shop

services

contact



*contact*

Debbie Louie  
2321 Fourth Avenue, Suite 306  
Seattle, WA 98121

(206) 441-7200 phone  
(206) 441-7228 fax  
jewelry@debbielouie.com